



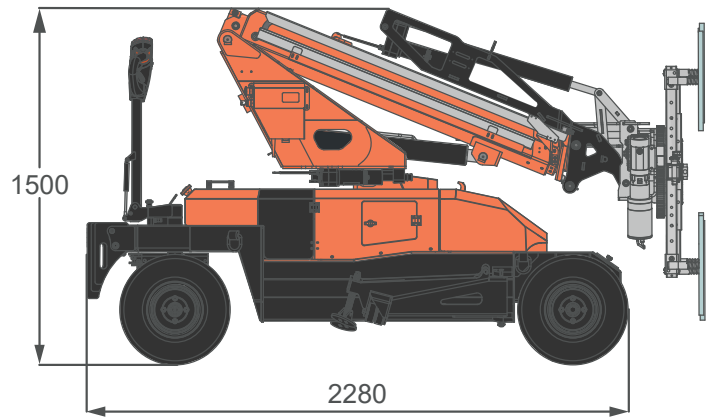
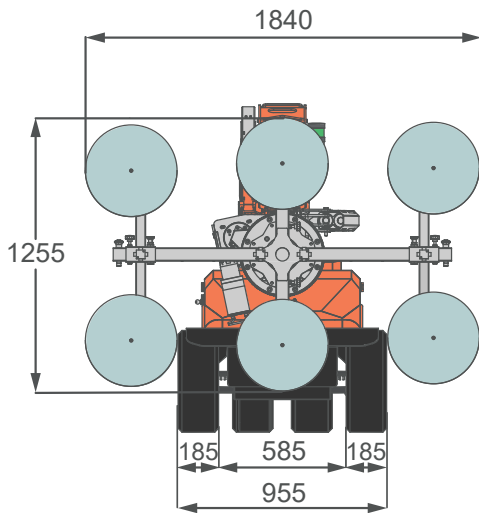
# Technical Data

Specification & Capacities

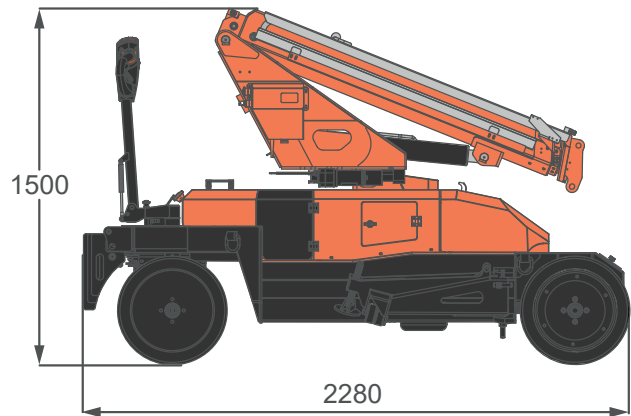
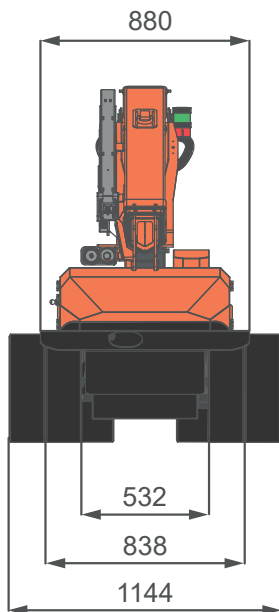
## MPK10

## OVERALL DIMENSIONS

### MPK10



## OUTDOOR WHEELS

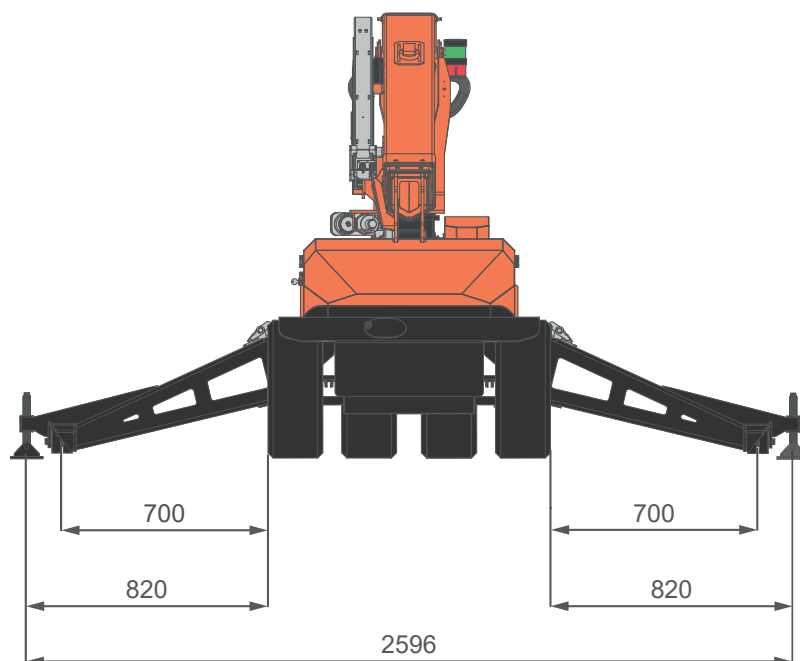


## TWIN WHEELS

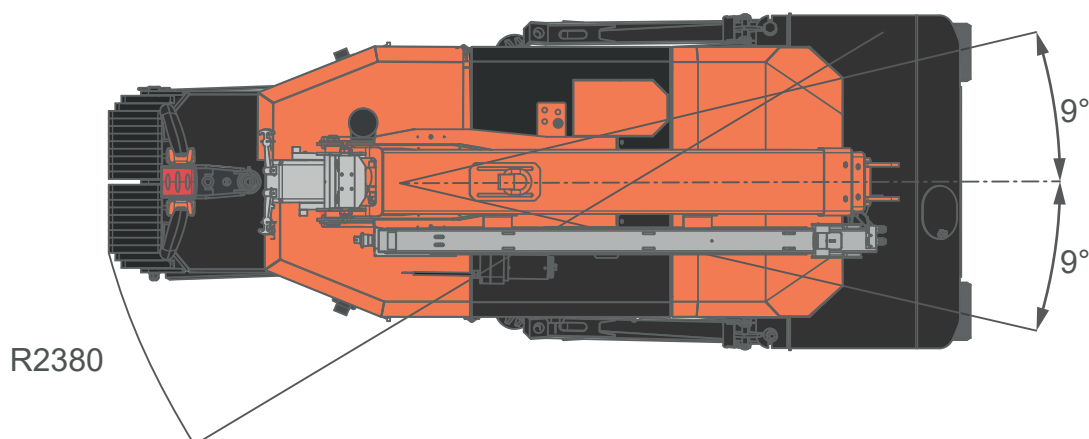
[mm]

## OVERALL DIMENSIONS

### MPK10 OUTRIGGERS




### BOOM SWING




## OVERALL INFORMATIONS

		NAME	DESCRIPTION	U.M	VALUE
CRANE INFO		OVERALL DIMENSIONS	Height	mm	1.500
			Length		2.280
			Width		955
		BOOM	Length	m	1,57 - 3,5
			Speed	s	48
		SLEWING	Angle	°	-9°/9°
			Speed	s	7
		LIFTING	Working Angle	°	-21°/58°
			Speed	s	42*
			Max Capacity	kg	990
			Back Wheel Max Load	kg	410
			Front Wheel Max Load		1.200
			Travel Speed	km/h	4
		Gradeability*	°	13	
		Working Temperature	°C	-20°/+40°	
		Lifting Class (UNI 4301-1)		A1	

WEIGHTS		CRANE	Total	kg	1.045
		COUNTERWEIGHT	CW1 (into frame)	kg	100
			CW2 (into hood)	kg	130

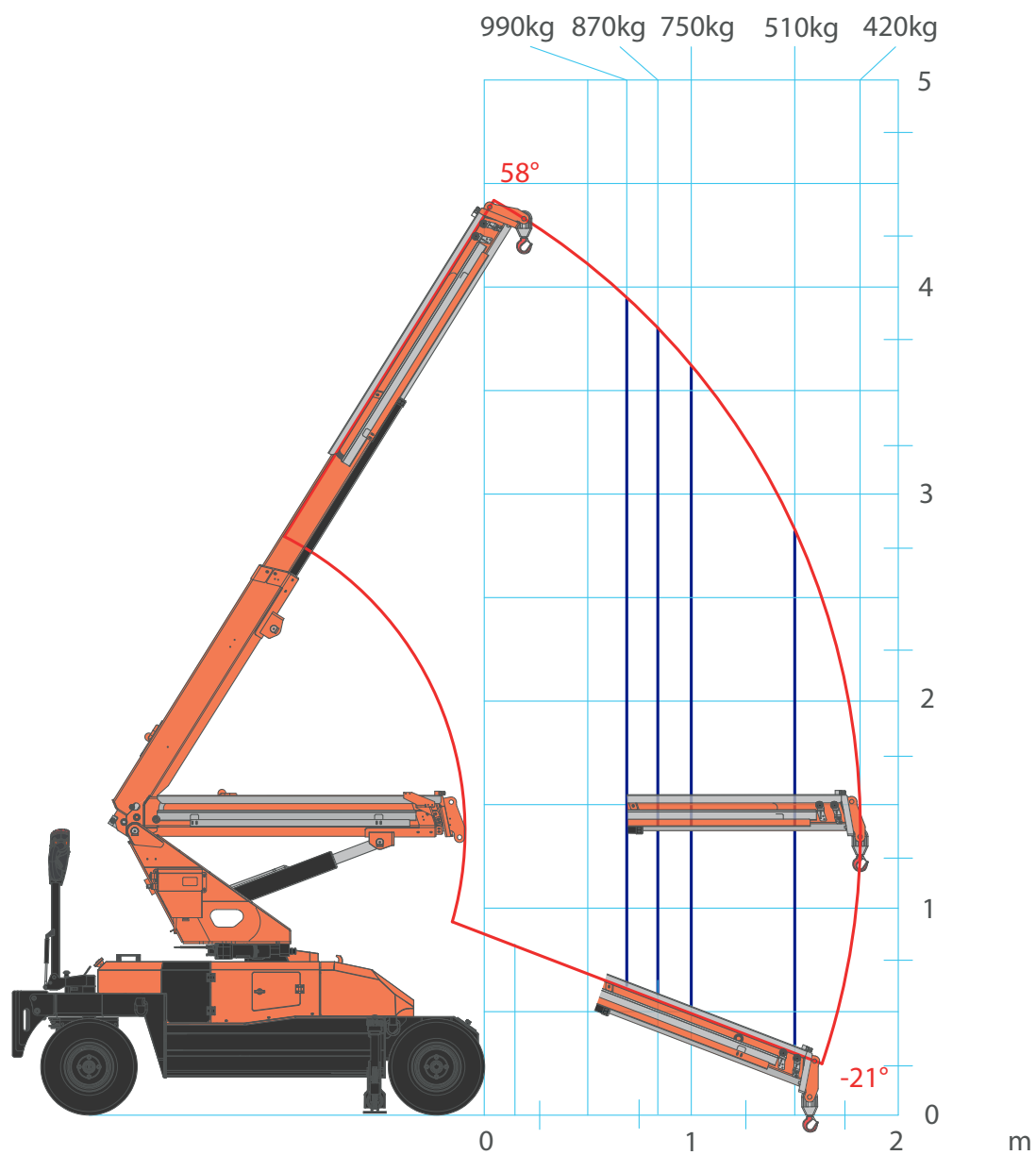
ACCESSORIES		JIB	JIB MPK10	kg	18
		GLASS MANIPULATOR	JVM10EV	kg	165
			JVM06EV	kg	110

ENGINE		ELECTRIC	Voltage	V	24
			Power	kW	2,2

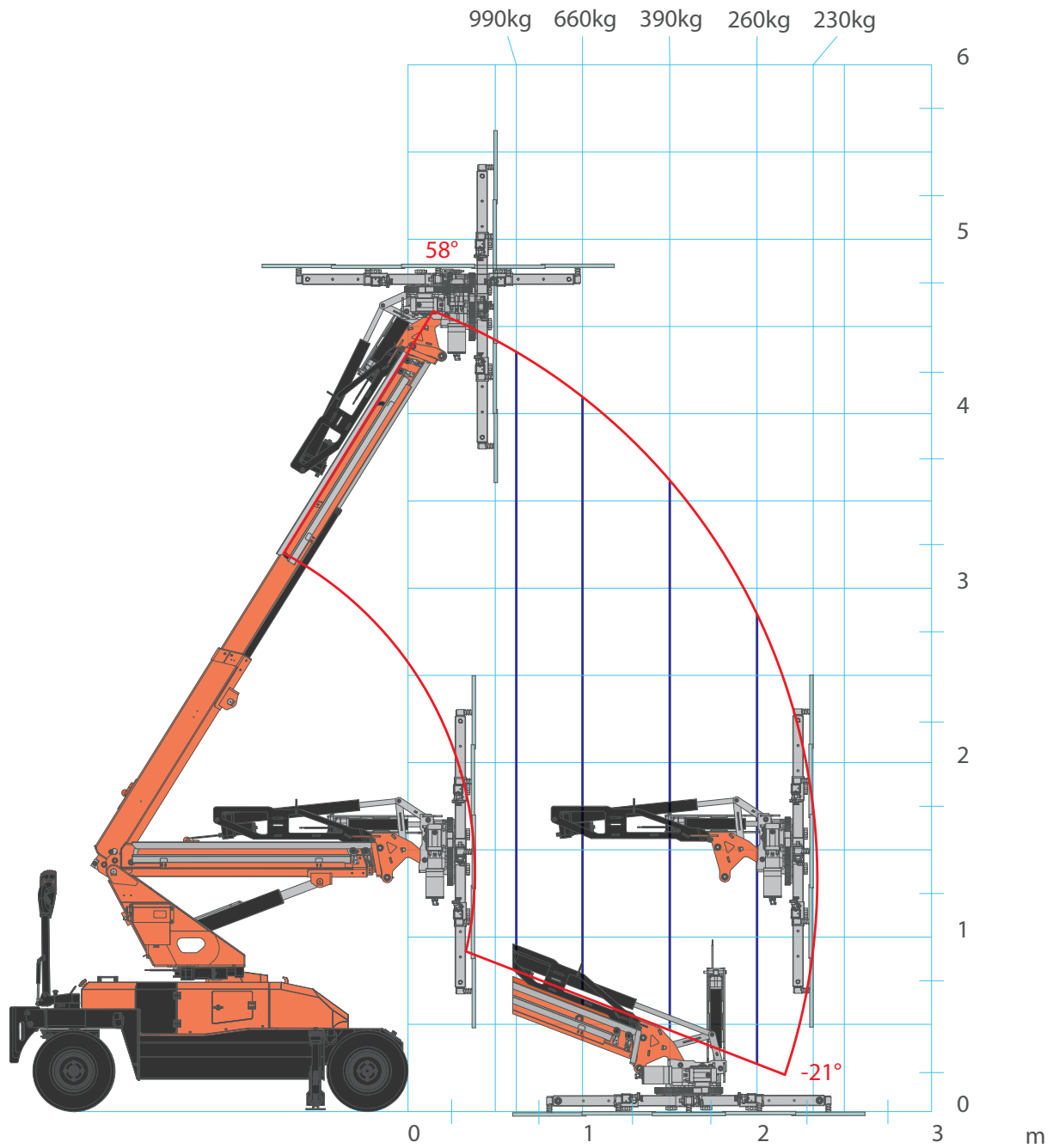
\*: Max value only for short distance and a maximum of 30 seconds. Forward movement at maximum gradeability is intended with extended boom and without load

## MPK10 - MAIN BOOM

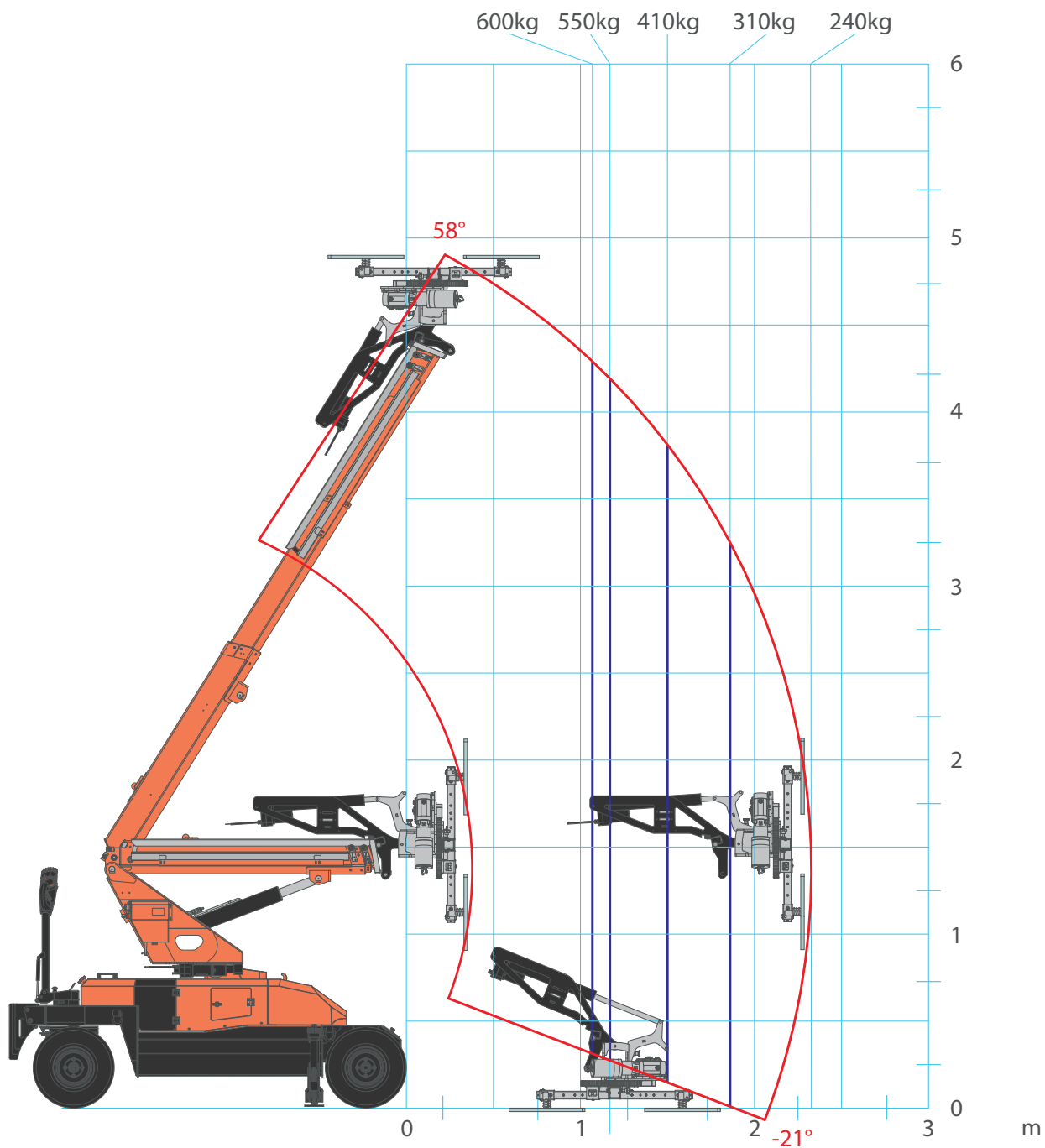
with HOOK



## MPK10 - JVM10EV

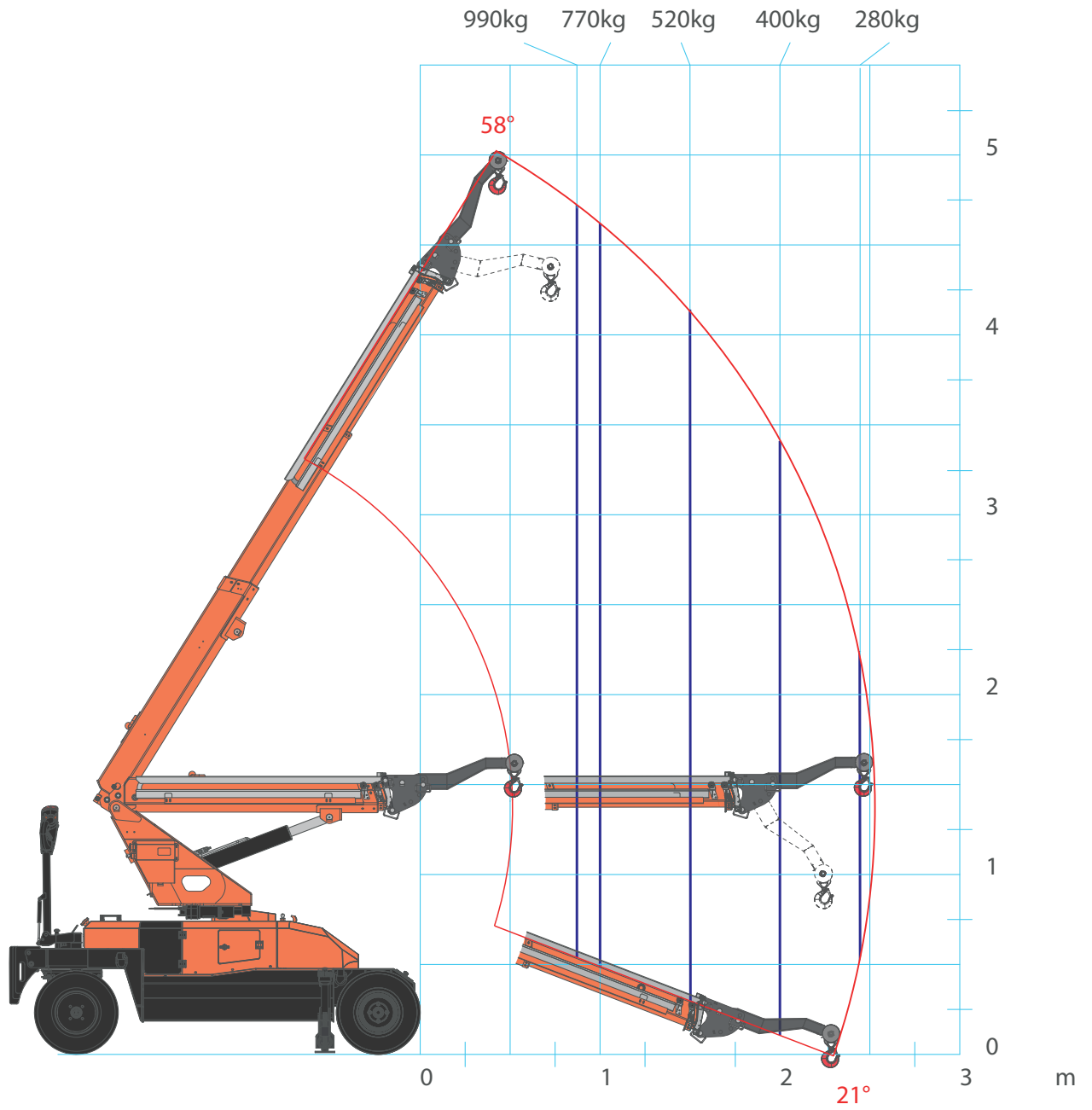


# MPK10 - JVM06EV



## MPK10 - JIBMPK10

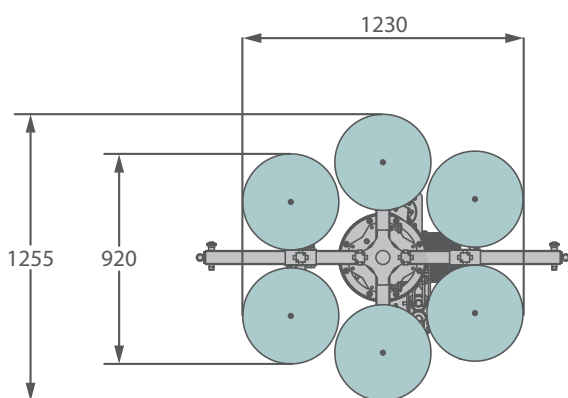
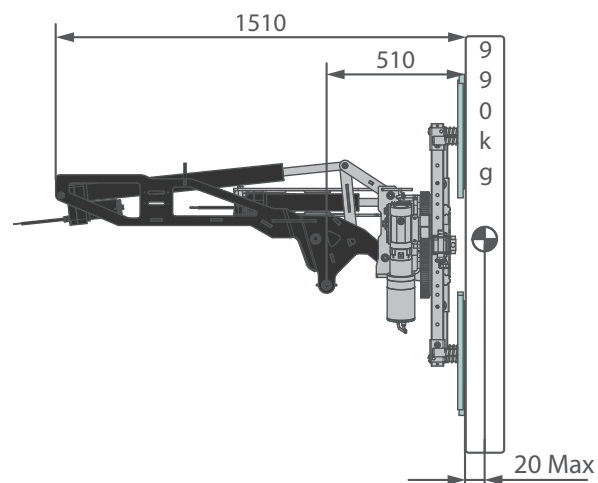
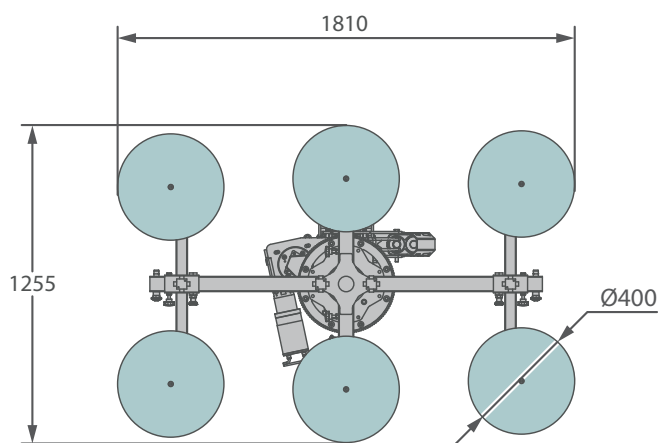
with HOOK



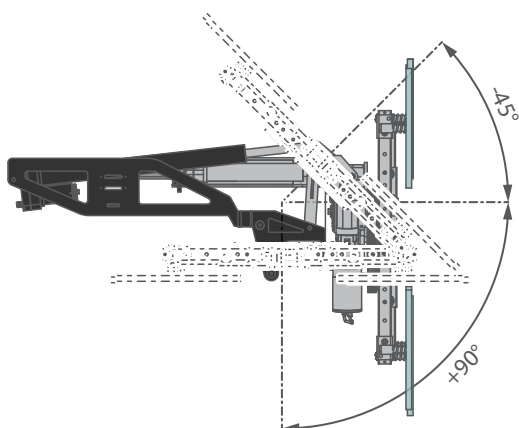


## ACCESSORIES FEATURES

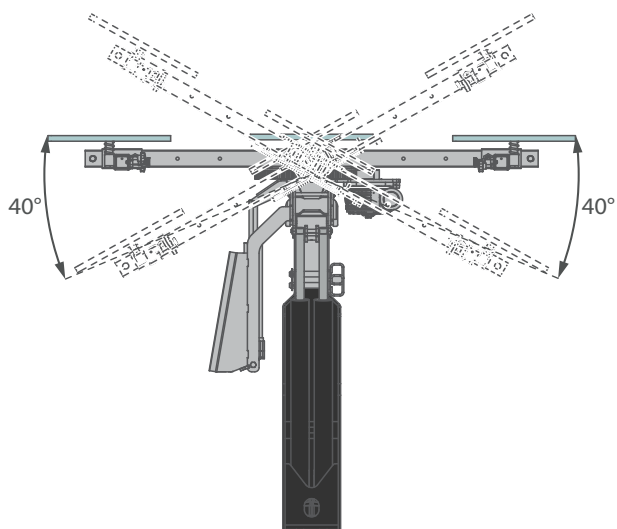
### JVM10EV



#### TILT



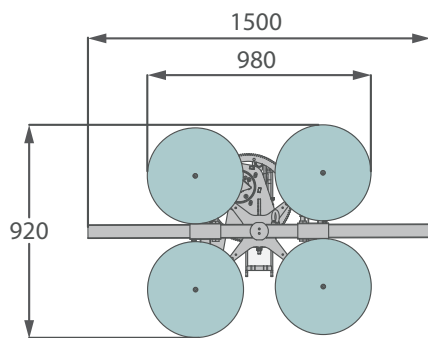
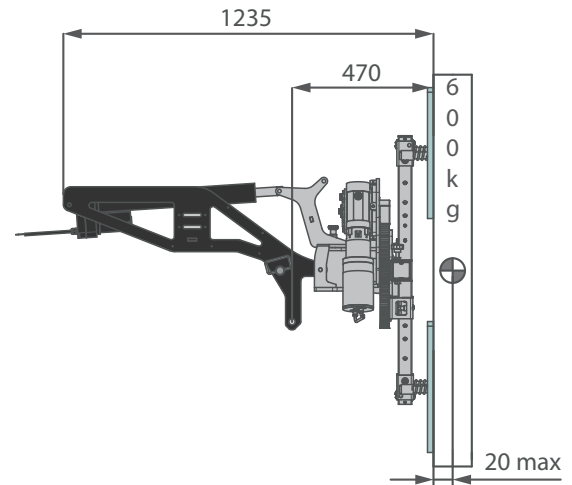
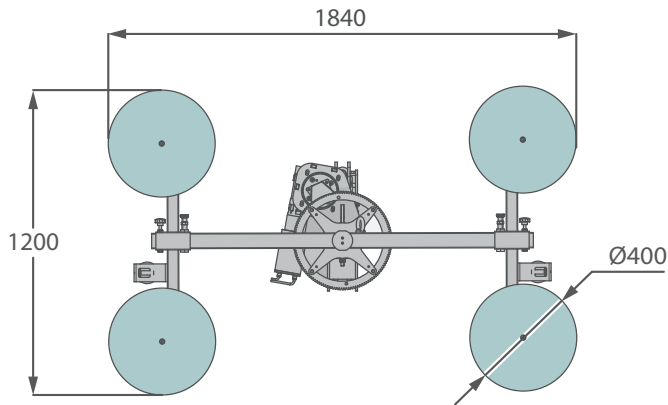
#### SWING



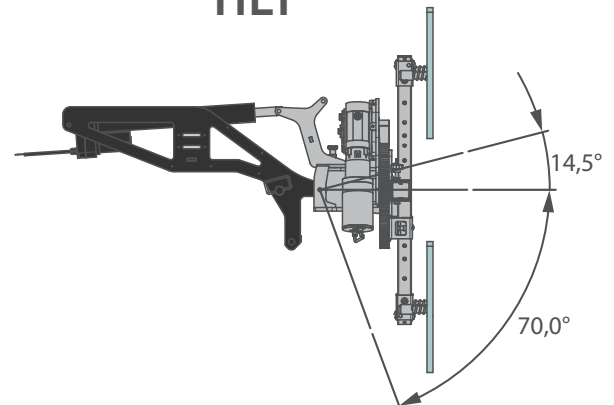
[mm]

## ACCESSORIES FEATURES

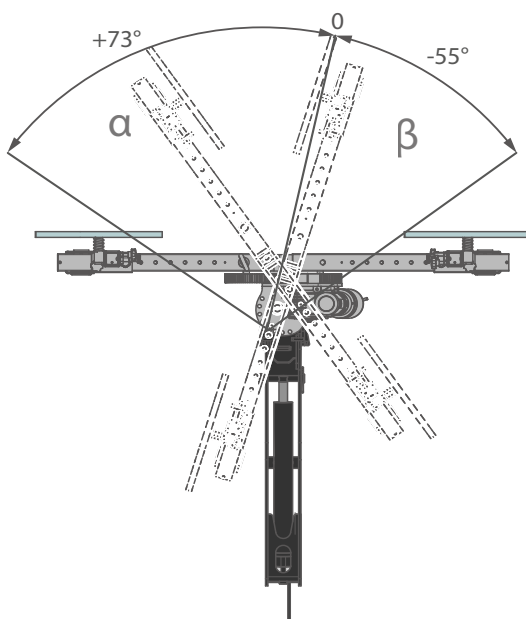
### JVM06EV



### TILT



### SWING

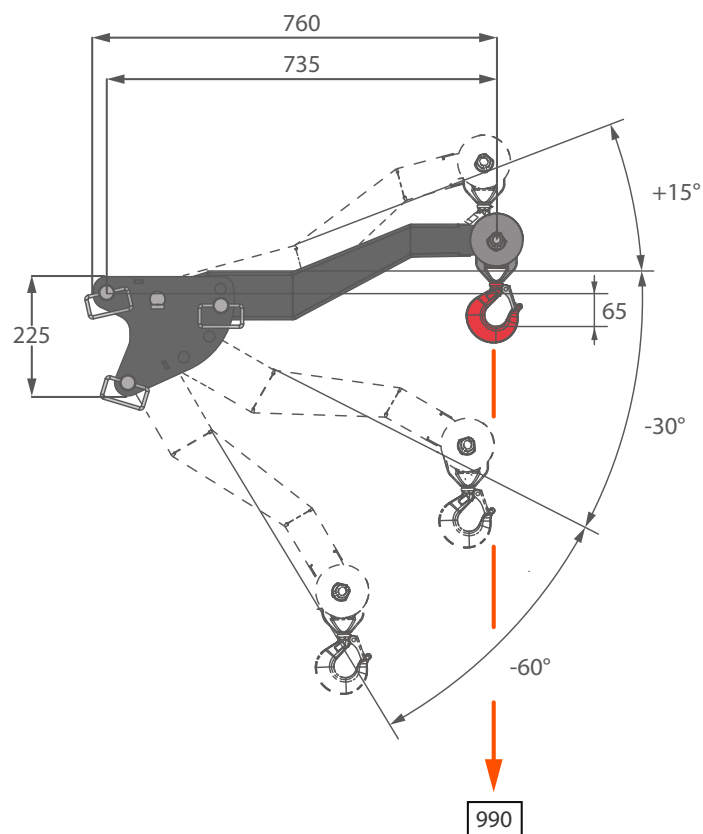



α	
+73°	5 POSIZIONI OGNI 18,3°
β	
-55°	4 POSIZIONI OGNI 18,3°

[mm]

## ACCESSORIES FEATURES

### JIB MPK10

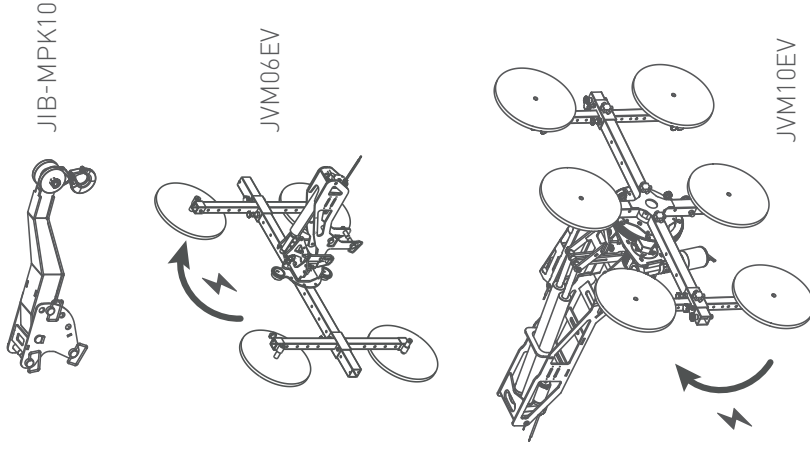


	<b>JIB</b>	JIB-MPK10	kg	20
---	------------	-----------	----	----

[mm]

## ACCESSORIES MPK10

### ATTACHMENTS & TOOLS



### BATTERY CHARGERS



RC-MPK10



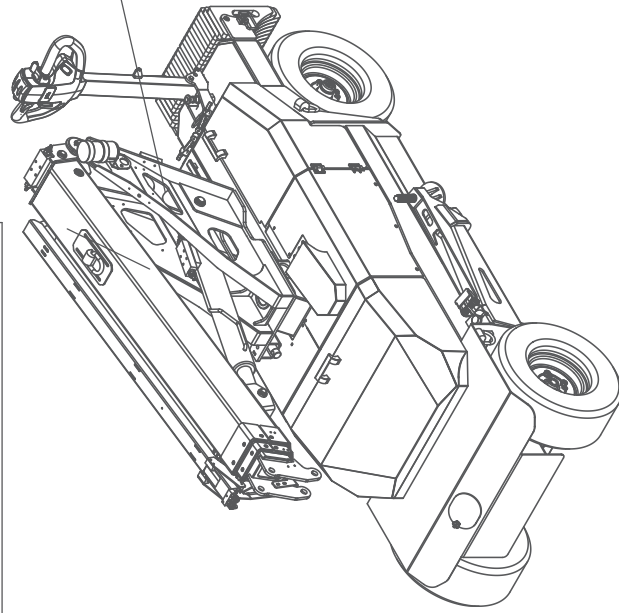
HOOK-MPK-JR



WT-MPK10












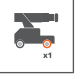




WT-MPK10-XL




CRANE COLOR	STANDARD	PC03
Boom & Covers	 RAL2004	<input type="checkbox"/> RAL
Chassis, Frames	 RAL7021	<input type="checkbox"/> RAL7021

## SYMBOLS

	Minipicker		Electric Engine		Boom Angle		Weight
	Travel Speed		Maximum Capacity		Boom Length		Back Wheel Loading Point
	Gradeability		Slewing		Jib		Front Wheel Loading Point
	Glass Manipulator		Working Temperature				

### REMARKS REFERRING TO LOAD CHART

- Load charts are calculated according to EN 13000.
- For the calculation of the load charts at least a wind speed of 9m/s (33km/h) and regarding the load a sail area of 1m<sup>2</sup> per ton load and a wind resistance coefficient of 1.2 on the load have been taken into account. For lifting of loads with large sail areas and/or high wind resistance coefficients the maximum wind speed as stated in the load charts has to be reduced.
- Lifting capacities are given in kilograms.
- The weight of the hook blocks and hooks is part of the load and therefore it must be deducted from the lifting capacities.
- Working radii are measured from the slewing centre.
- The lifting capacities given for the telescopic boom apply if the folding jib is removed.
- Subject to modification of lifting capacities.